

SECTION 10, T.7N., R.3E., S.L.B. & M.

IN WEBER COUNTY

SCALE 1" = 400'

TAXING UNIT: 58

SEE PAGE 13-1

U.S.A.  
230130014  
80 AC  
( TOTAL 120 AC )

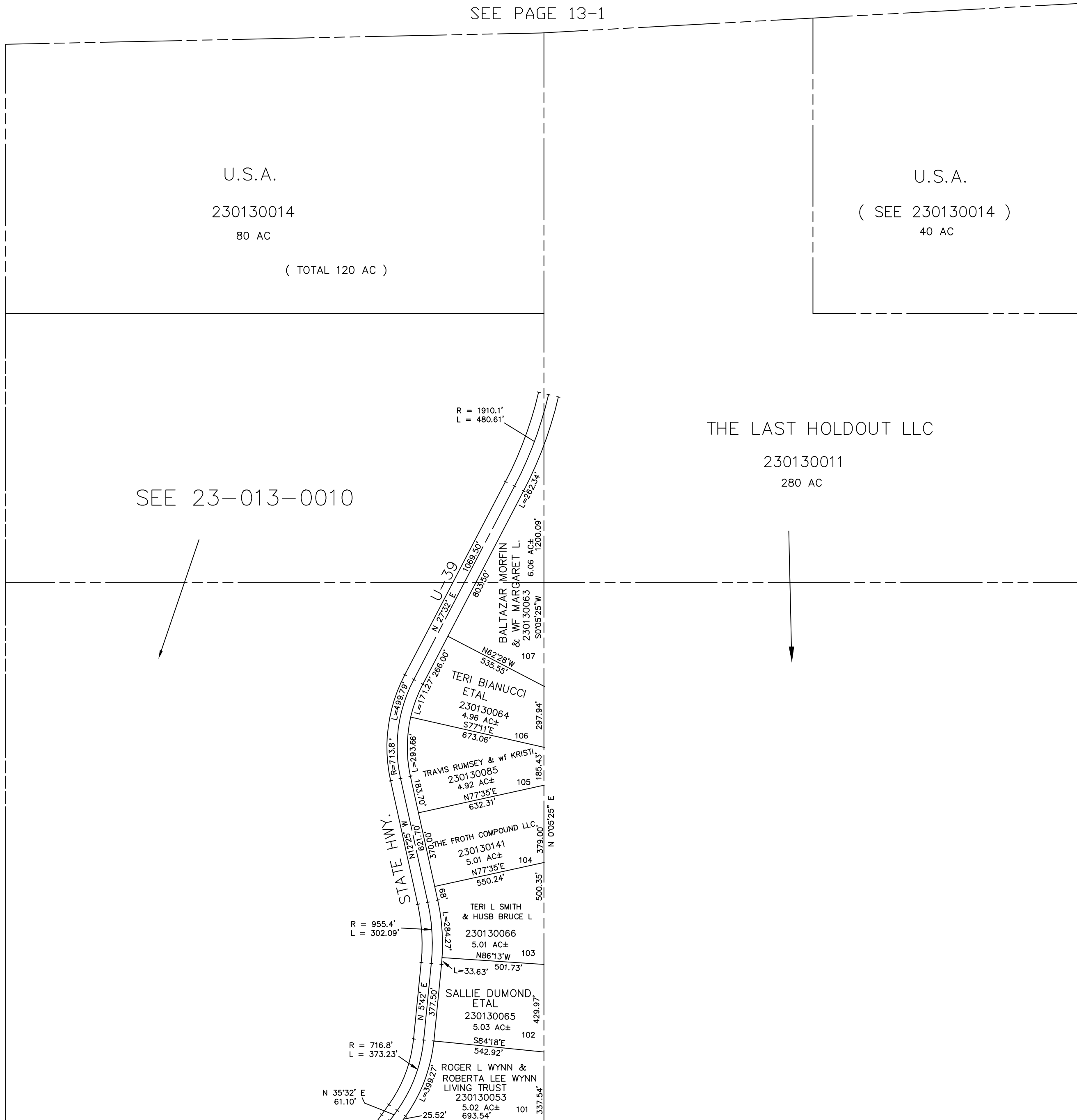
U.S.A.  
( SEE 230130014 )  
40 AC

THE LAST HOLDOUT LLC  
230130011  
280 AC

SEE 23-013-0010

SEE PAGE 13

SEE PAGE 13



SEE PAGE 13-4

NOTE: THIS PLAT CONTAINS ALL OF  
LOTS 101 THRU 107 IN THE  
UNRECORDED BEAVER CREEK  
ESTATES SUBDIVISION